

Harvest Thyme

by Kim Diehl



Quilt size: 60 1/2" x 60 1/2"

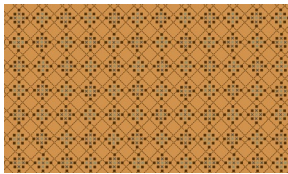
Down to Earth Quilt

Designed by Kim Diehl

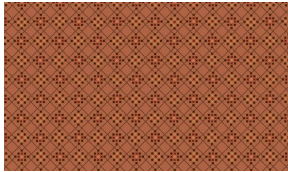
www.henryglassfabrics.net

Down to Earth Lap Quilt Ordering Guide

| SKU | Yards | Meters | 6 Kits | 12 Kits |
|--|-----------|--------|---------|---------|
| 2460-30 | FQ | 0.23m | 1 bolt | 1 bolt |
| 2460-80 | FQ | 0.23m | 1 bolt | 1 bolt |
| 2460-303 | FQ | 0.23m | 1 bolt | 1 bolt |
| 2461-33 | FQ | 0.23m | 1 bolt | 1 bolt |
| 2461-66 | FQ | 0.23m | 1 bolt | 1 bolt |
| 2462-404 | FQ | 0.23m | 1 bolt | 1 bolt |
| 2463-66 | FQ | 0.23m | 1 bolt | 1 bolt |
| 2463-80 | FQ | 0.23m | 1 bolt | 1 bolt |
| 2464-404 | FQ | 0.23m | 1 bolt | 1 bolt |
| 2465-80 | FQ | 0.23m | 1 bolt | 1 bolt |
| 2466-30 | FQ | 0.23m | 1 bolt | 1 bolt |
| 2466-33 | FQ | 0.23m | 1 bolt | 1 bolt |
| 2467-99 | 3/4 yds | 0.69m | 1 bolt | 1 bolt |
| 2468-48 | FQ | 0.23m | 1 bolt | 1 bolt |
| 2469-11 | FQ | 0.23m | 1 bolt | 1 bolt |
| 2470-43 | FQ | 0.23m | 1 bolt | 1 bolt |
| 2471-61 | FQ | 0.23m | 1 bolt | 1 bolt |
| 2473-40 | 1 3/4 yds | 1.60m | 1 bolt | 2 bolts |
| 44" Backing Fabric Option | | | | |
| 2463-66 | 4 yds | 3.66m | 2 bolts | 4 bolts |
| * Indicates binding fabric. FQ = 18" x 22" (0.45m x 0.55m) All fabric quantities are based on 15yd bolts unless otherwise indicated. | | | | |



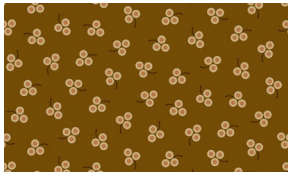
2460-30
Waffle Weave
Pumpkin



2460-80
Waffle Weave
Terracotta



2460-303
Waffle Weave
Clay



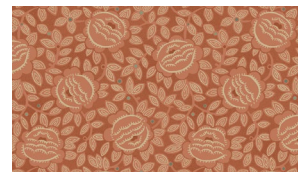
2461-33
Berry Bliss
Pecan



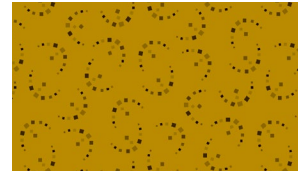
2461-66
Berry Bliss
Sage Green



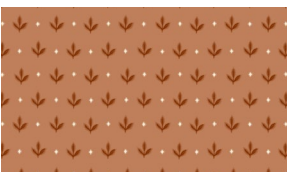
2463-66
Cabbage Rose
Sage Green



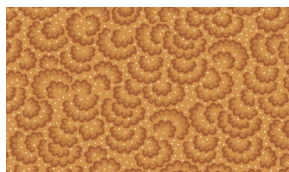
2463-80
Cabbage Rose
Terracotta



2464-404
Crescent Toss
Mustard



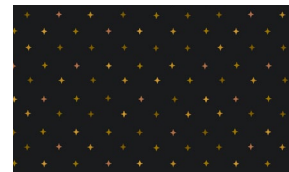
2465-80
Falling Leaves
Terracotta



2466-30
Cloudburst
Pumpkin



2466-33
Cloudburst
Clay



2467-99
Starry Night
Onyx



2468-48
Morning Glories
Dove Gray



2469-11
Tulip Wreaths
Sea Glass



2470-43
Hopscotch
Dove Gray



2471-61
Leaf Peeping
Sea Glass



2472-404
Mustard Seeds
Mustard



2473-40
Clover Field
Wheat